

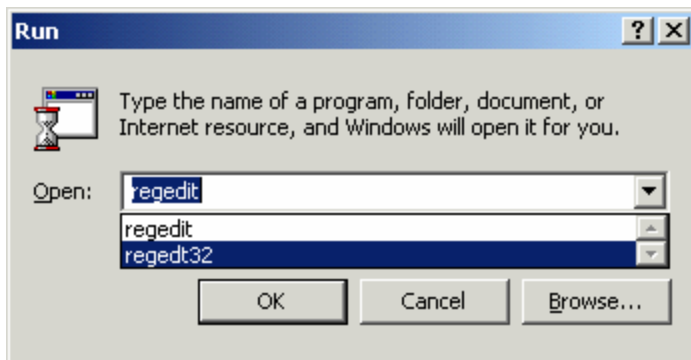
Setting up ActiveSync Support for Limited Accounts

Install ActiveSync Support using an Administration Account

You need to install the ActiveSync Support using an Administrators account.

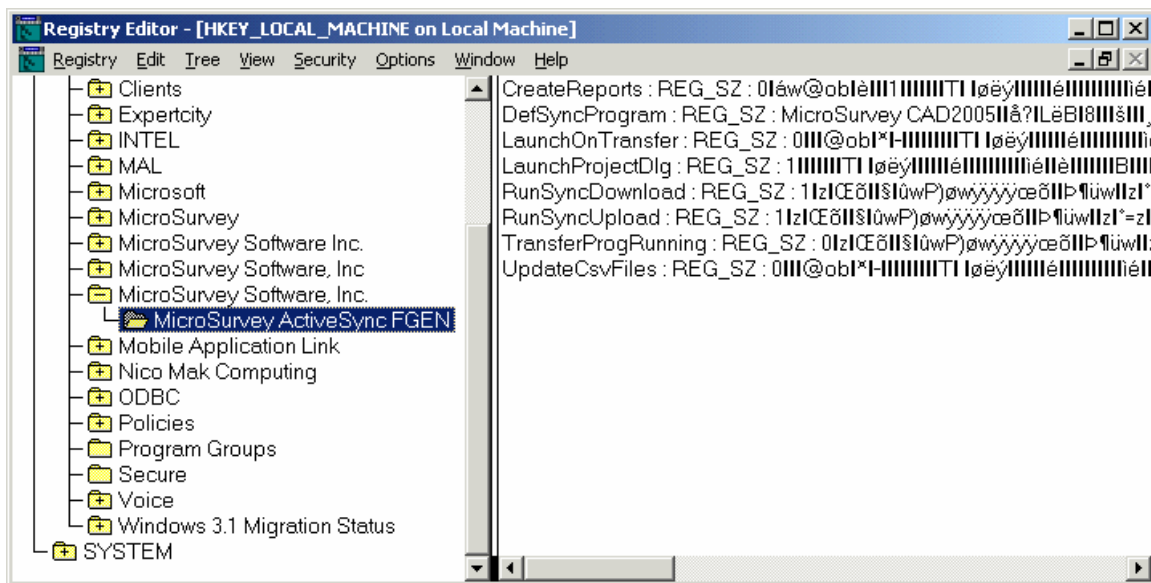
Windows 2000 – Run REGEDT32.EXE

If you're using a Windows 2000 machine you need to run the REGEDT32 program from the RUN command found in the Windows Start Menu.

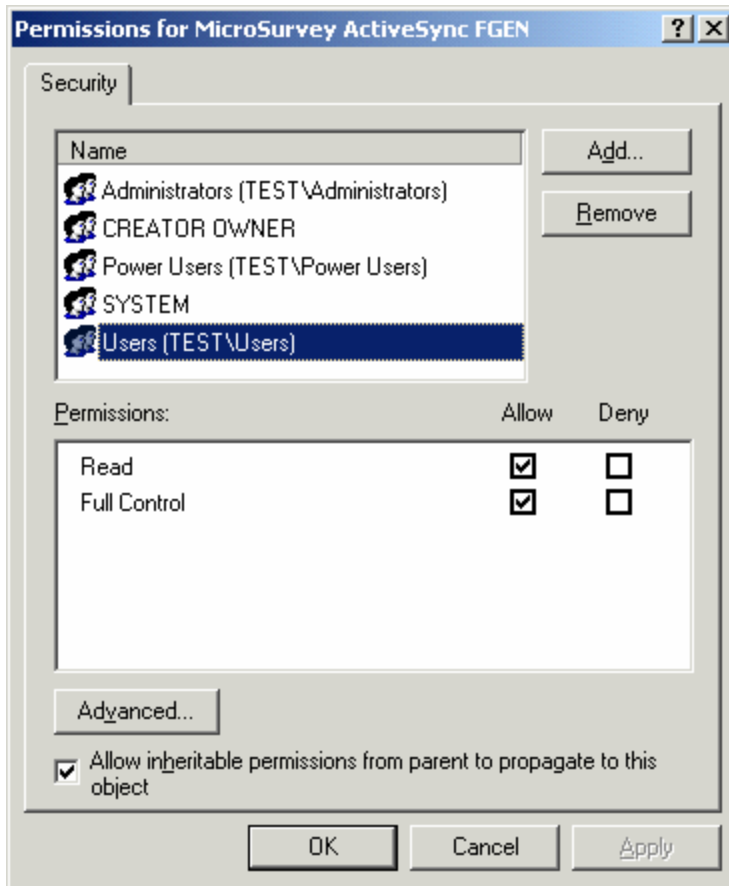


After you start this program you need browse to:

HKEY_LOCAL_MACHINE\SOFTWARE\MicroSurvey Software, Inc.\MicroSurvey ActiveSync FGEN



Highlight the reg key just like the image shown above. From the Security Menu, select Permission which will display the following dialog:

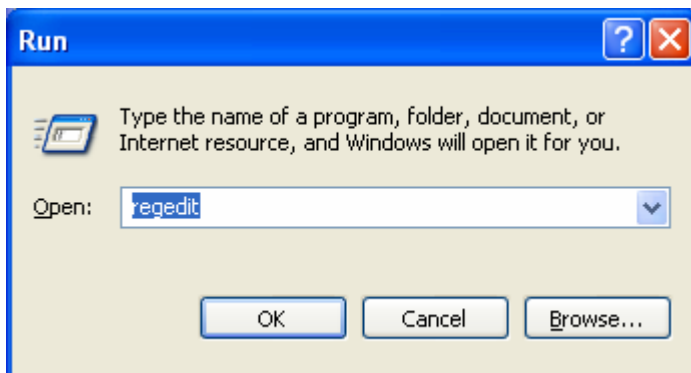


What ever group the user belongs to, you need to make sure you set their access permission to Full Control. In our example, we gave the users group full control access to our registry key.

Press OK to save the changes and then exit out of the registry editor.

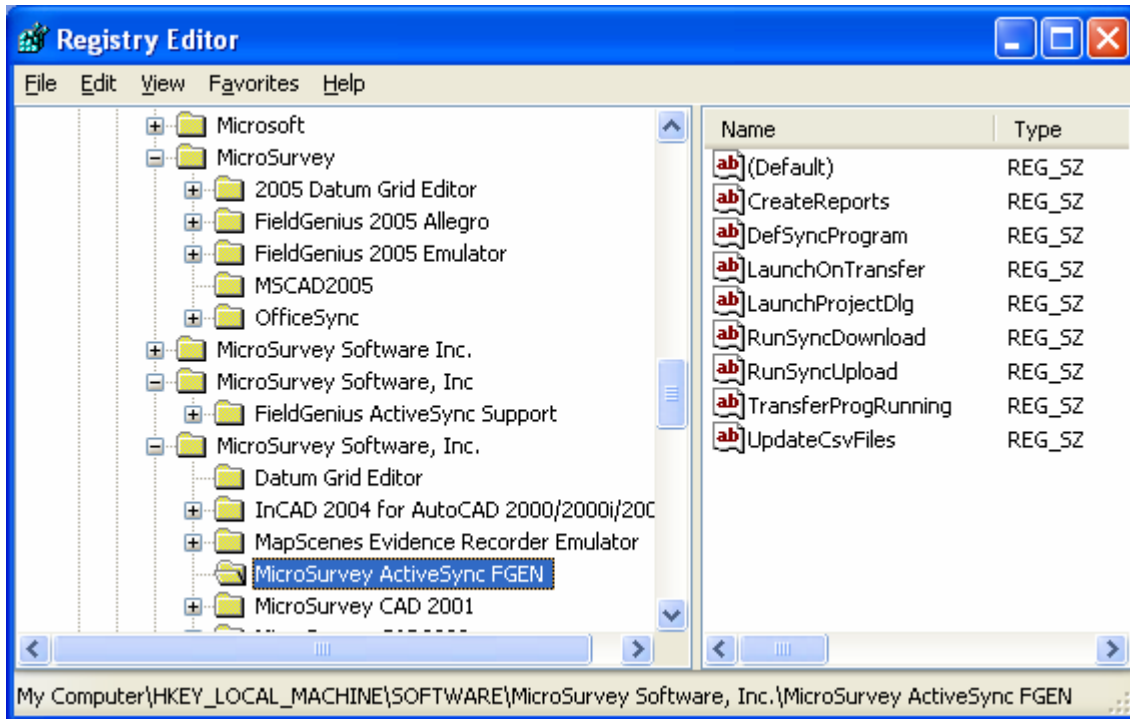
Windows XP – Run REGEDIT.EXE

If you're using a Windows XP machine you need to run the REGEDIT program from the RUN command found in the Windows Start Menu.

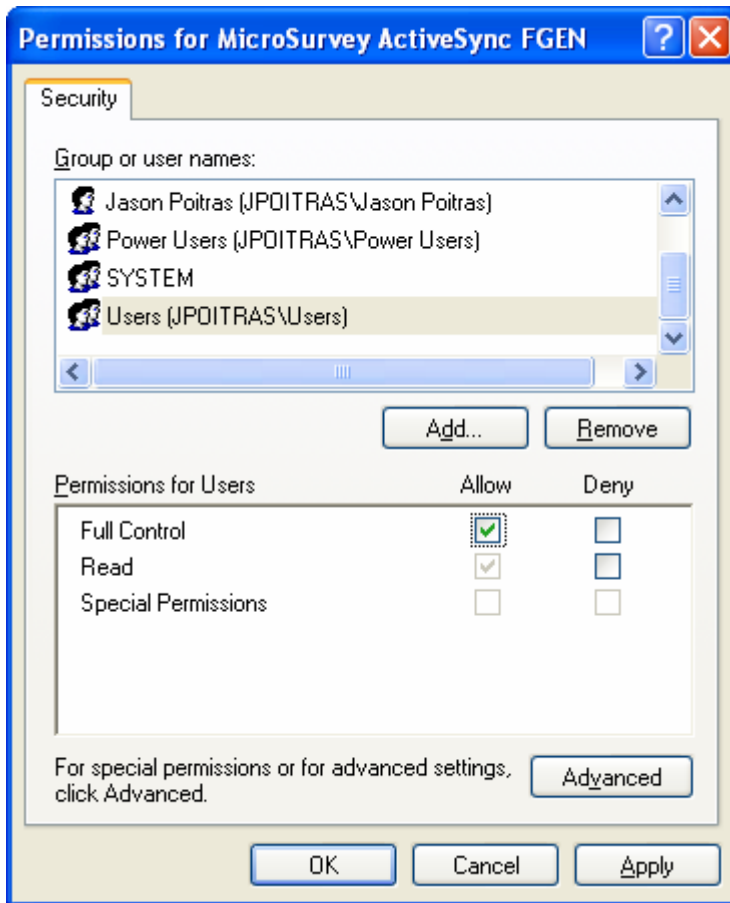


After you start this program you need browse to:

HKEY_LOCAL_MACHINE\SOFTWARE\MicroSurvey Software, Inc.\MicroSurvey ActiveSync FGEN



Now you can right click on our registry key and select Permissions... from the menu.



Whatever group the user belongs to, you need to make sure you set their access permission to Full Control. In our example, we gave the users group full control access to our registry key.

Press OK to save the changes and then exit out of the registry editor.

Log on with Limited Account

You are now ready to log in with the Limited account.