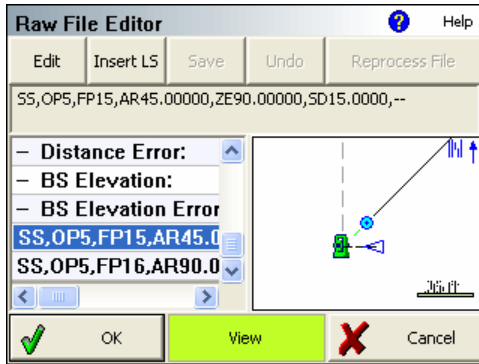


New Functionality

Raw File Viewer – This now has a View button that allows the user to see the map in a split view. Tapping on certain records will show up as icons in the view. For example tapping an OC record will display an instrument icon in the drawing, and a SS record will be displayed as a blue circle.



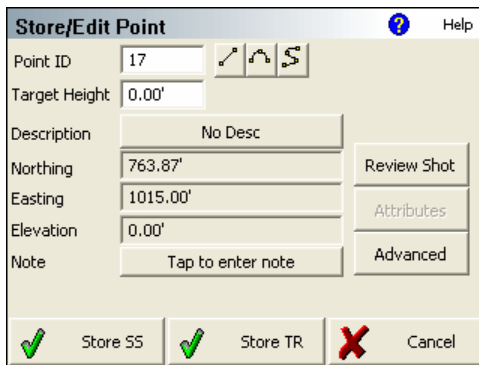
Perpendicular Offsets - point picker is a check-box type button and will now remain in effect until switched off.

Backsight bearings with a distance observation and a stored point now write a sideshot (SS) record to the raw file.

Occupy point using backsight bearing and a stored point, will now update the BK record so the backsight id is equal to the id for the newly created point.

Staking List now has option to Pick Points from map.

Sideshot mode streamlined so it is faster to use. The review shot screen has been eliminated and now the shot information can be viewed using the Review Shot button.

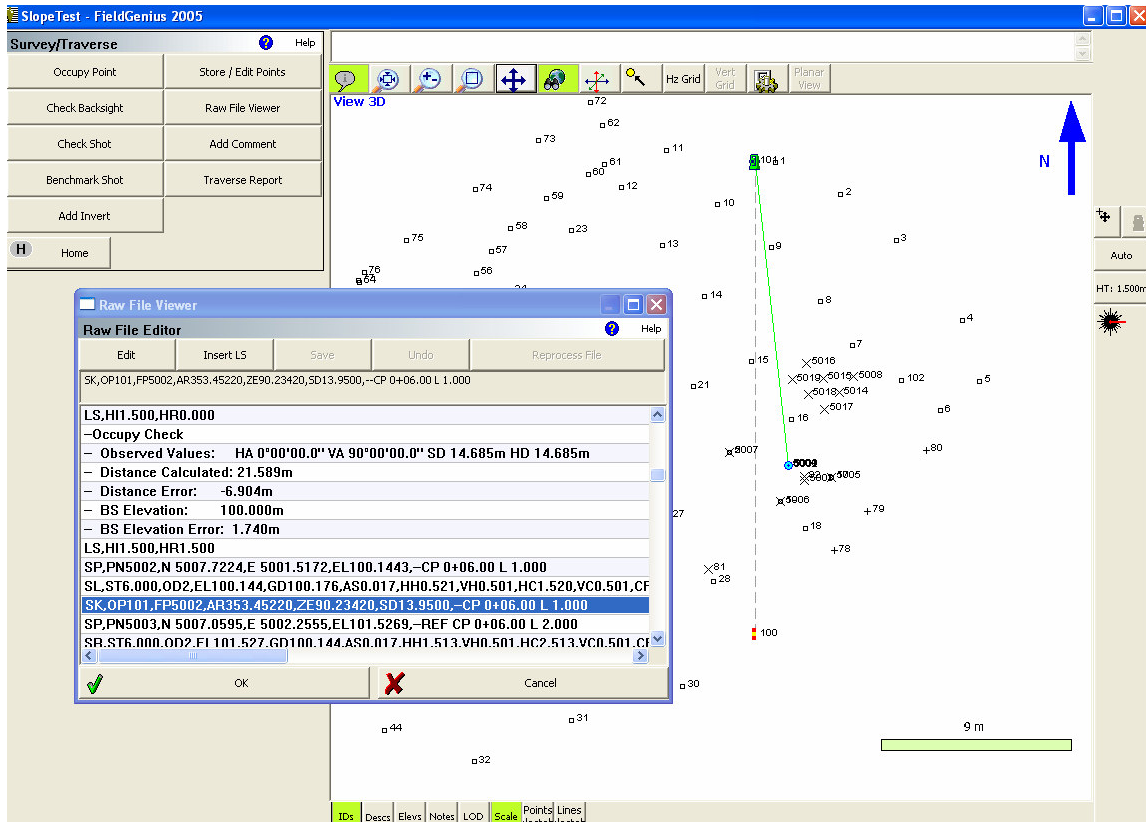


When typing in a description within the Automap library dialog, pressing return will select the current description and close the dialog.

The prompts for querying the user to add a new description to the Automap library have been streamlined.

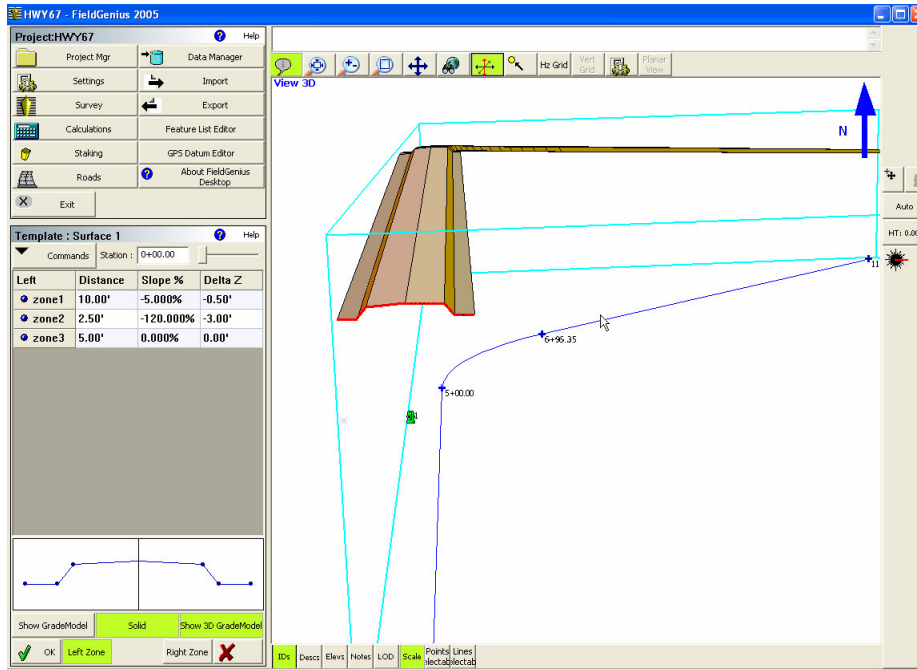
Desktop version – Feature list editor and datum grid editor added to main menu.

Desktop version now supports maximizing the raw file editor and coordinate editor.



Desktop and data collector versions now support preview display of your raw file. Highlight rows in the traverse file and see icons appear in the map view to indicate setups, backsights, stakeout shots, sideshots and more.

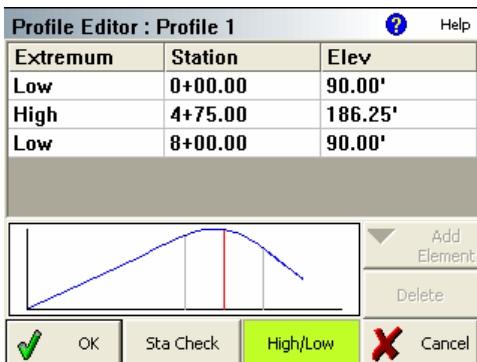
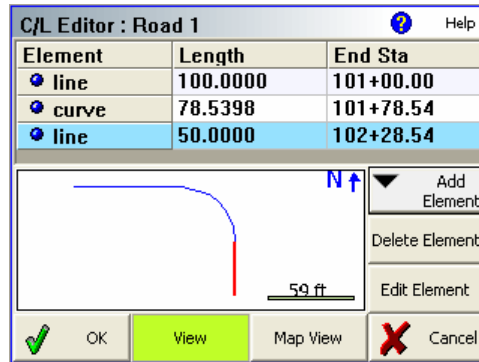
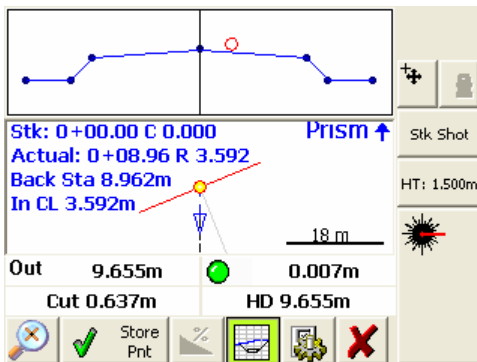
Desktop Version – When you’re creating roads and editing a template, you can view your proposed road complete with horizontal, vertical and template data. This can be later uploaded to your data collector for staking.



FieldGenius Desktop version is included free of charge.

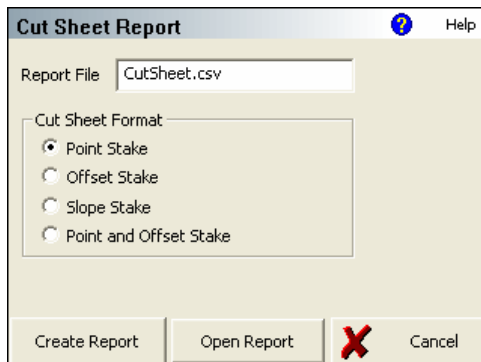
Roads button added to Main menu to access the new roading functions.

New Roothing functionality added to FieldGenius. This new functionality now allows for manual entry of horizontal alignments, vertical profiles and templates.



Stake to surface can be used with a horizontal alignment.

Cut sheet reporting added to Staking Menu.



Stake alignment command added to staking Menu.

Roads Settings screen added to the settings menu.

Updated help files. The new help files are installed with the new emulator version. The help files can be accessed on your desktop computer from the Start Button → Programs → MicroSurvey FieldGenius → FieldGenius 2005 Help

Updated Manual. This is available in PDF from Start Button → Programs → MicroSurvey FieldGenius → FieldGenius 2005 Manual.

Desktop Install will now install the feature list editor.

Sleep mode on Pocket PC devices was disabled whenever FieldGenius was running. This functionality was added to prevent the system from locking up after the user turned the device back on. We've now changed the functionality in FieldGenius 2005 so the default is to **NOT** disable the sleep mode. The default value in the msurvey.ini file is PreventAutoOff=NO. If you want to turn this feature on, edit it so it says PreventAutoOff=YES.

Check Backsight – This has now been updated so that a note is written to the raw file indicating if the user pressed the Update Backsight button.

Curve Calculator now available from Calculations menu

Program Fixes or Updates

Multiset instruction text was made smaller to fit the screen on devices running Pocket PC.

Datums - In the desktop version, you can now see all the available European systems.

Main Menu → Staking → Stake Line / Arc: When staking an arc, certain arcs would not be displayed correctly. The command has been modified to correct this.

Trimble GPS: Fixed a problem which was introduced when carrier phase logging was added as a feature in v1.0.9. A fixed solution would be reset after completing a point measurement.

Optimized the way FieldGenius initializes the instrument to use the ATR mode when doing a measurement.

Modified the Leica (GSI) total station driver to correct a problem that occurred when requesting the instrument to turn to a position.

Made improvements to the Multiset routine with regards to turning motorized instruments to the next measurement point.

Fixed communication problem with Leica TC800 instruments.

Face 2 observations to backsights are now normalized when using the occupy point routine.

Fixed communication problem with older Topcon non-robotic instruments. There is a new option that can be selected, Non-Robotic (Delay). This corrects problems that were reported with older 300 series instruments.

Stake Line toolbar - Start station field is now enabled and can be changed by the user.

Perpendicular Offset - removed automatic SIP behavior for this toolbar

Typing a Point ID into the Point Chooser dialog will no longer create an invalid Zoom window when a non-existing Point ID is entered

Main Menu → Survey → Store / Edit Points: This has been updated so it doesn't close after the user stores the point.

Stake Line - If you specify the baseline by point numbers, and try to store a staked position. The new point you stored will not be displayed until you close the stake toolbar. This has now been corrected.

Leica ATR – Fixed a problem where if the user had ATR turned on, then switched to RL mode to take a shot, when they switched back to IR mode the ATR button would be enabled on the instrument toolbar, even though it was turned off on the instrument.

A timestamp is now written to the header of saved XML files

The project manager grid now redraws itself correctly after deleting a project.

The edit box in the 'Create New Project' dialog now fits within portrait devices.

The focus is now initially set to the description button on the point edit dialog. This helps speed up storing sideshots.

The row heights of the descriptions in the Automap library dialog have been reduced to display more items.

Surface Staking Toolbar – removed a redundant cut / fill value.

Combined job, crew and weather notes into one dialog. They can now be accessed using the Job Information button in the settings screen.

LS records are now forced to be saved anytime a backsight reading is stored. Previously a LS record would only be written if the instrument or target height had changed.

Select Stake Surface - If you select a surface in the stake settings screen, the "Stake Surface" toggle remained grayed out. This has been corrected.

Localization - Column widths resized automatically to the extents of the values.

Stake Arc / Line – Certain cases would cause the routine to not interpolate the elevation along the line if the end point had different elevations. This is now fixed.

Check Backsight – This has now been updated so that a note is written to the raw file indicating if the user pressed the Update Backsight button.

Check Backsight – the observed values to the backsight are recorded as a note to the raw file whenever this command is used.

Measure button on Pocket PC devices has been updated so it repaints itself correctly after the SIP has been opened. This will fix situations where the measure button appears to be gone.

Support for the Topcon Hiper Lite receiver. There is a new radio select called “Topcon FH” in the GPS profile settings that can be selected.

In the units settings, changed the wording from **Feet** to **Intl Feet**. US Survey and Meters remain unchanged.