



MicroSurvey CAD 2015

Features and Benefits

Unlock the full potential of your workstation with the 64-bit version of MicroSurvey CAD. Harness the power and capabilities of the integrated IntelliCAD 8 engine, and experience faster drafting and calculation operations while working with larger drawings, more points, and an overall more powerful MicroSurvey CAD than ever before.

Table of Contents

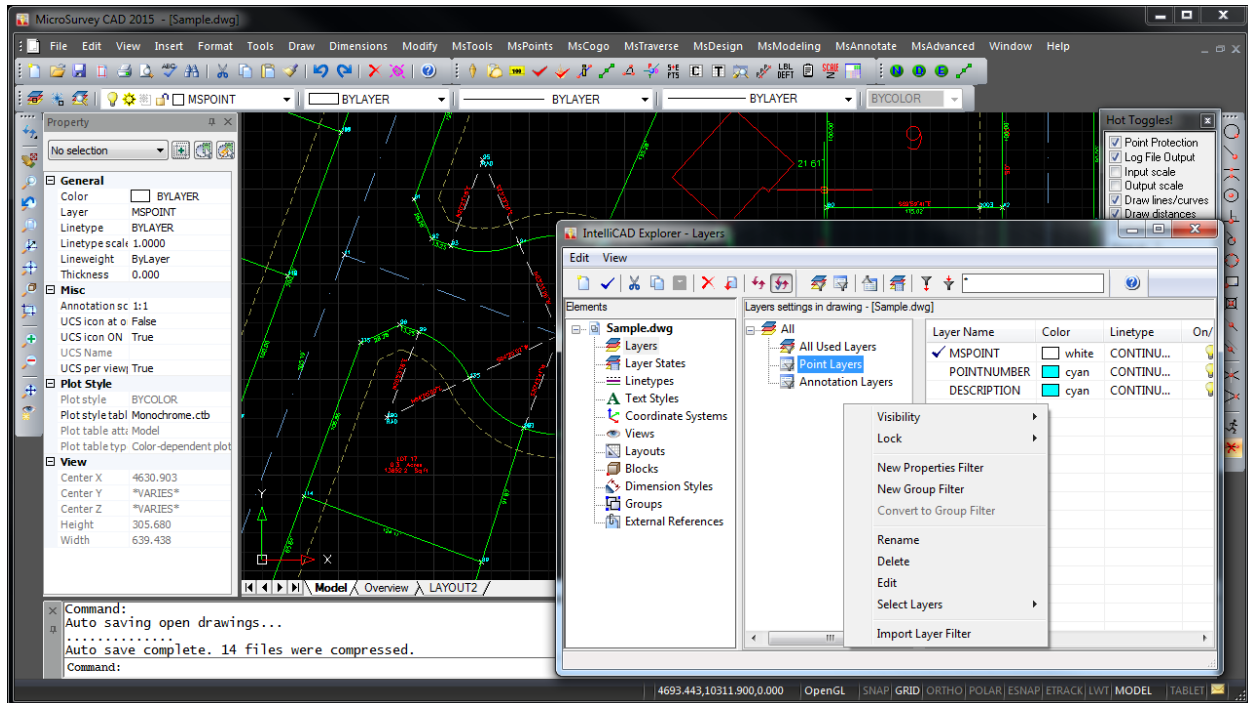
| | |
|--|----|
| MicroSurvey CAD 2015 | 2 |
| New: IntelliCAD 8 | 2 |
| New: Dynamic Licensing | 3 |
| Enhanced: AutoMAP Plotted Descriptions | 4 |
| Enhanced: AutoMAP Substitution Codes..... | 5 |
| Enhanced: COGO Bearing Rotation..... | 6 |
| Enhanced: Clusters, Draw Error Vectors..... | 7 |
| Enhanced: Google Earth (kml/kmz) Export..... | 8 |
| Enhanced: Leica DBX Import..... | 9 |
| Enhanced: Line/Curve/Multi-Tie Tables..... | 10 |
| Enhanced: Line Labeling, Bearing Defaults | 11 |
| Enhanced: Point Cloud Conversion (.xyz files)..... | 12 |

MicroSurvey CAD 2015

Release Date: December 12, 2014

New: IntelliCAD 8

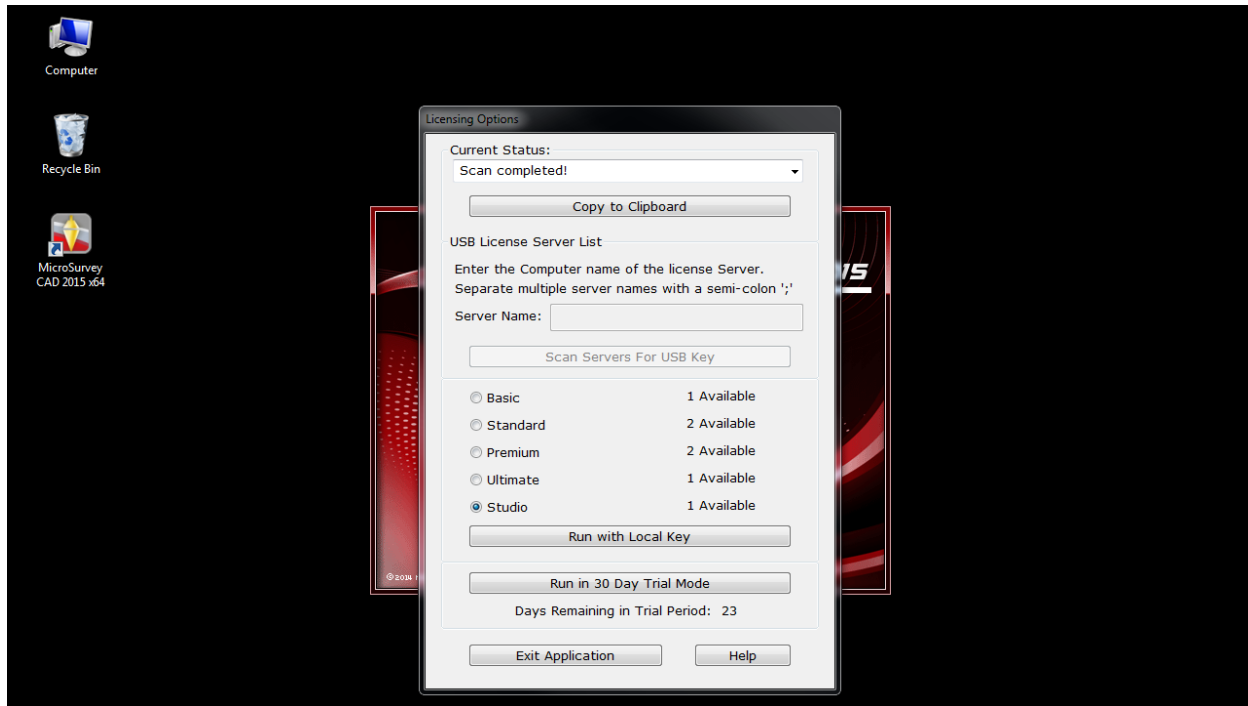
Upgrade Tour Movie: [click here](#)



| Feature | Benefit |
|---|---|
| Available in 64-bit and 32-bit versions | 64-bit applications can use more system resources and can access those resources faster. Drafting and calculation operations are faster due higher bandwidth, and you can work with larger drawings containing more points. |
| DWG 2013 support | Read and write the latest 2013 format .dwg files from AutoCAD 2015. |
| Improved Civil3D object enablers, improved DGN support, import Collada (.dae) models, attach MrSID MG4 compressed raster images | Work with more data from various sources |
| Speed enhancements | Faster cursor updates, faster print previews, faster raster image attachment, faster PDF export, etc... |
| Display Themes | Default "Black" theme provides a fresh new look |
| Adaptive Grid | Slick new grid display that updates as you zoom |
| Layer States, Layer Filters, new Layer Tools | Powerful and easy-to use layer tools, integrated directly into the IntelliCAD Explorer |
| Quick Select | Easy selection of entities by specified properties |
| New 3D Orbit and enhanced Viewpoint commands | Easier manipulation of 3D views |
| New Rendering system | Render directly within the CAD display |

New: Dynamic Licensing

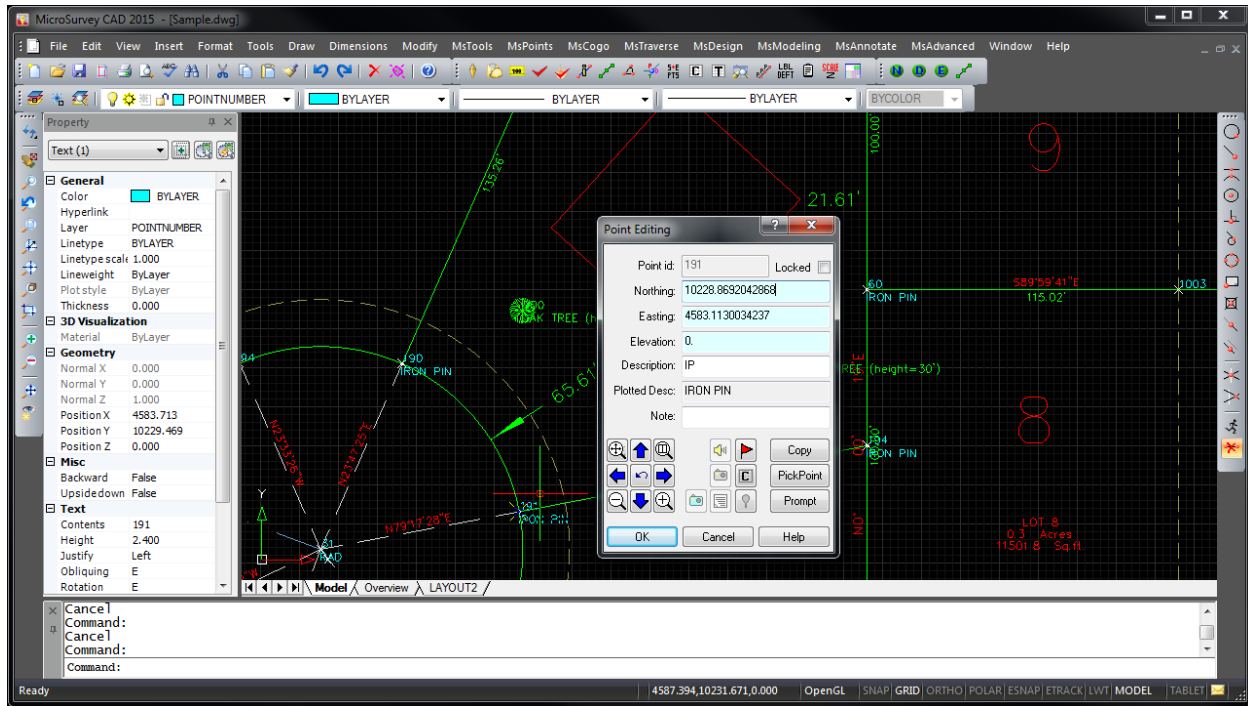
Upgrade Tour Movie: [click here](#)



| Feature | Benefit |
|--|---|
| One installation for all product levels (Basic, Standard, Premium, Ultimate, Studio), with no option to specify during installation. | Installing the “wrong” product level is no longer possible, and reinstalling to change product levels is no longer required. |
| Appropriate functionality is available based on the connected USB license key. | Run any MSCAD 2015 installation with any valid USB key, and use any valid MSCAD 2015 USB key with any MSCAD 2015 installation. Offices with multiple product levels are not limited to which computers can be used with each key. |

Enhanced: AutoMAP Plotted Descriptions

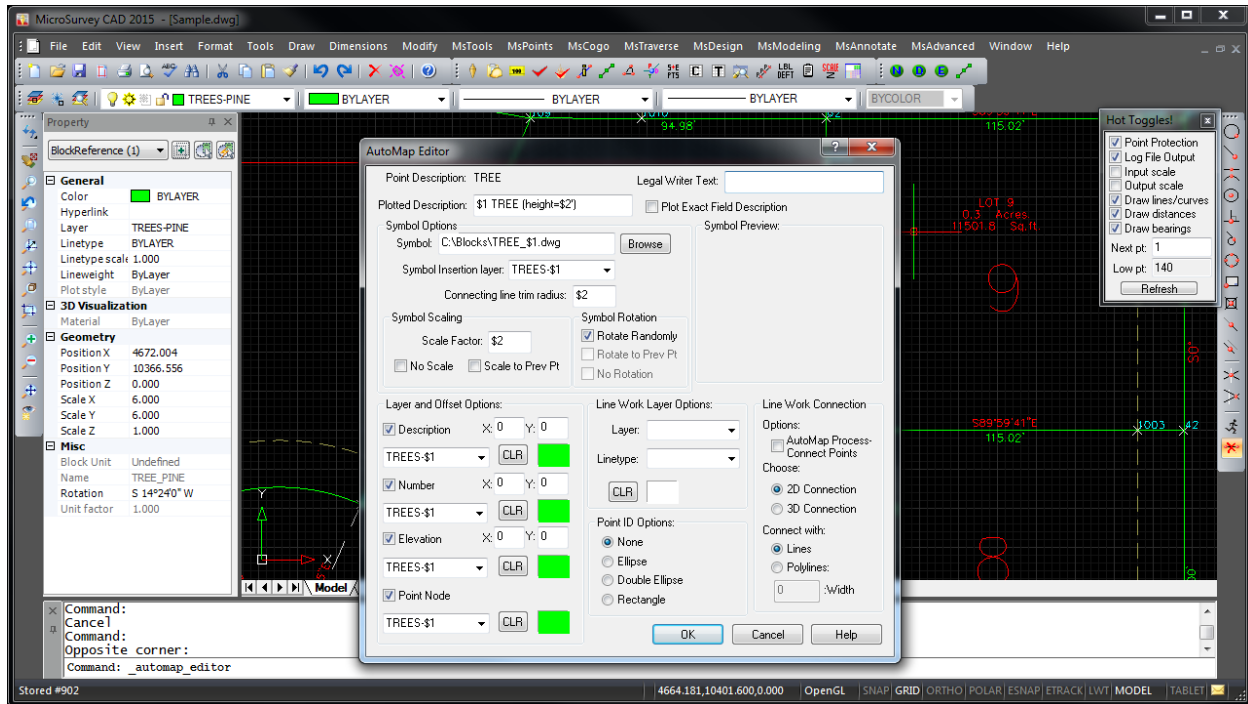
Upgrade Tour Movie: [click here](#)



| Feature | Benefit |
|---|---|
| Plotted Description field in the Single Point Editor dialog | Easily review your point data by seeing both the field coded description and the plotted description |
| Plotted Description column (optional) in the Active Coordinate Editor | (same as above) |
| Use Plotted Descriptions option in the Export ASCII and Export KML commands | Automatically export plotted descriptions into exported ASCII and KML files, for better comprehension by third-parties who may be unfamiliar with your field codes. |

Enhanced: AutoMAP Substitution Codes

Upgrade Tour Movie: [click here](#)



Feature

Substitution Codes, as introduced in MicroSurvey CAD 2013, are now supported in more fields.

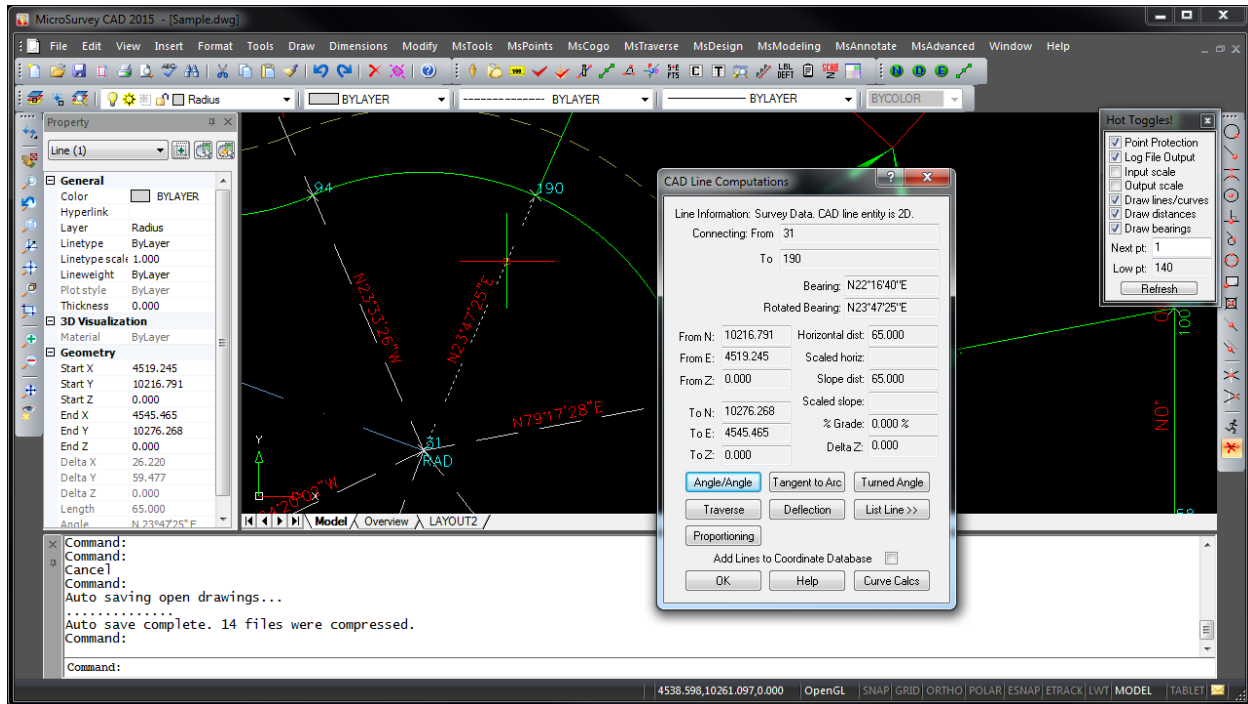
Benefit

Use Substitution Codes (\$0, \$1-\$9, \$*, \$+, \$\$) in more AutoMAP fields, including: Plotted Description (as before), Legal Description Writer, Layer Names, Symbol Names, Symbol Scale Factor, and Symbol Trim Radius fields.

For example: for points called "TREE OAK" and "TREE MAPLE" use symbol name "C:\Blocks\ \$1_TREE.dwg" and layer name "\$1" in your "TREE" AutoMAP Library entry to automatically use insert "C:\Blocks\ OAK_TREE.dwg" on layer "OAK" and "C:\Blocks\ MAPLE_TREE.dwg" on layer "MAPLE".

Enhanced: COGO Bearing Rotation

Upgrade Tour Movie: [click here](#)



Feature

Lines are displayed on CAD Lines dialog with both the original and rotated Bearing/Azimuth.

Curves are displayed on the CAD Curves Dialog with both the original and rotated Chord Bearing/Azimuth.

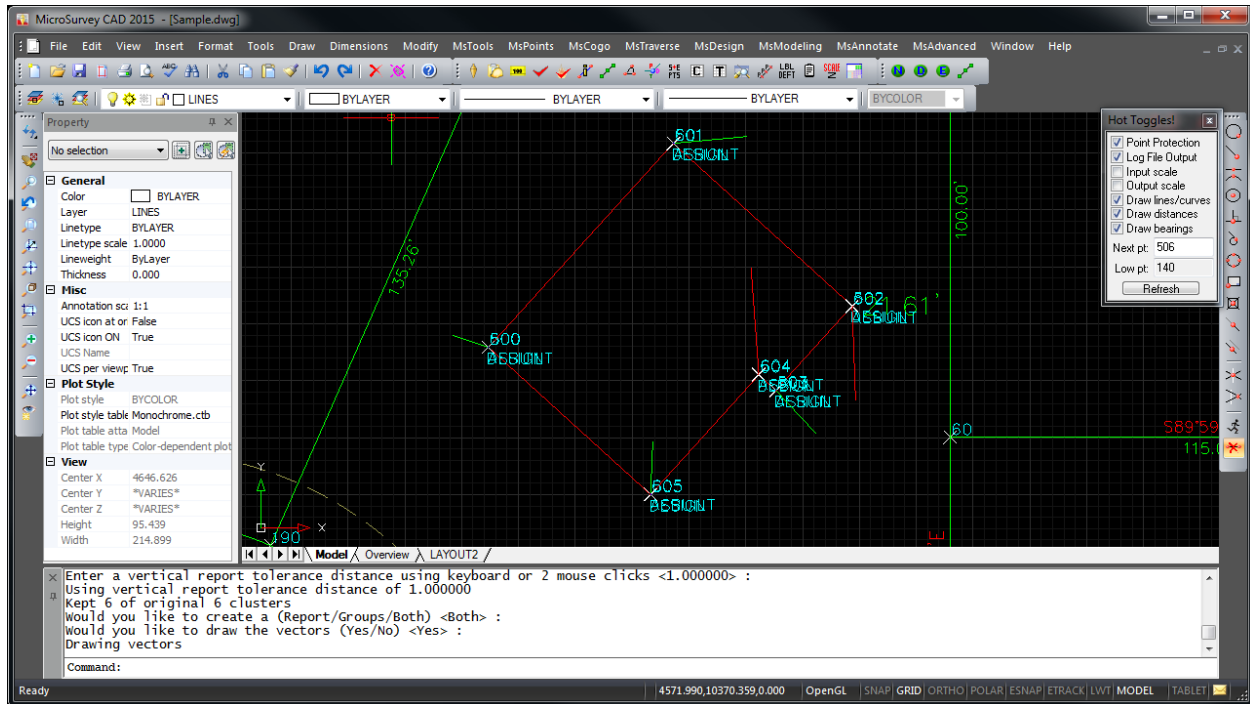
Benefit

View line details as referenced in two different systems.

View curve details as referenced in two different systems.

Enhanced: Clusters, Draw Error Vectors

Upgrade Tour Movie: [click here](#)



Feature

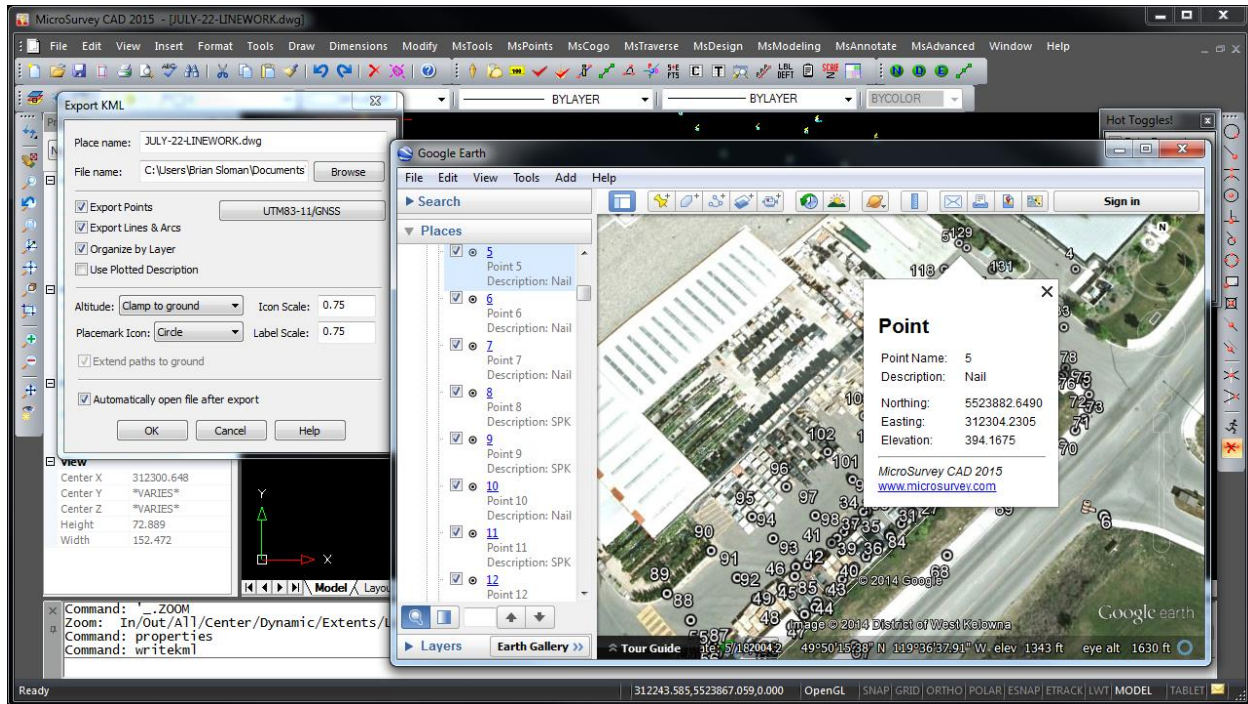
Draw Error Vectors (optional)

Benefit

After defining your clusters and viewing the Clusters report, you can also now draw the error vectors. Completely customizable, the vectors can be drawn 2D or 3D, Polar or Orthometric (where the vector is broken up into its separate X, Y, and Z components), with customizable layers and colors depending on whether they passed or failed the specified pass/fail tolerances, and exaggeration factors can be specified to make the vectors larger and more clearly visible.

Enhanced: Google Earth (.kml/.kmz) Export

Upgrade Tour Movie: [click here](#)



Feature

Specify the point icon, icon size, and label size

More details are exported to the .kml/.kmz file

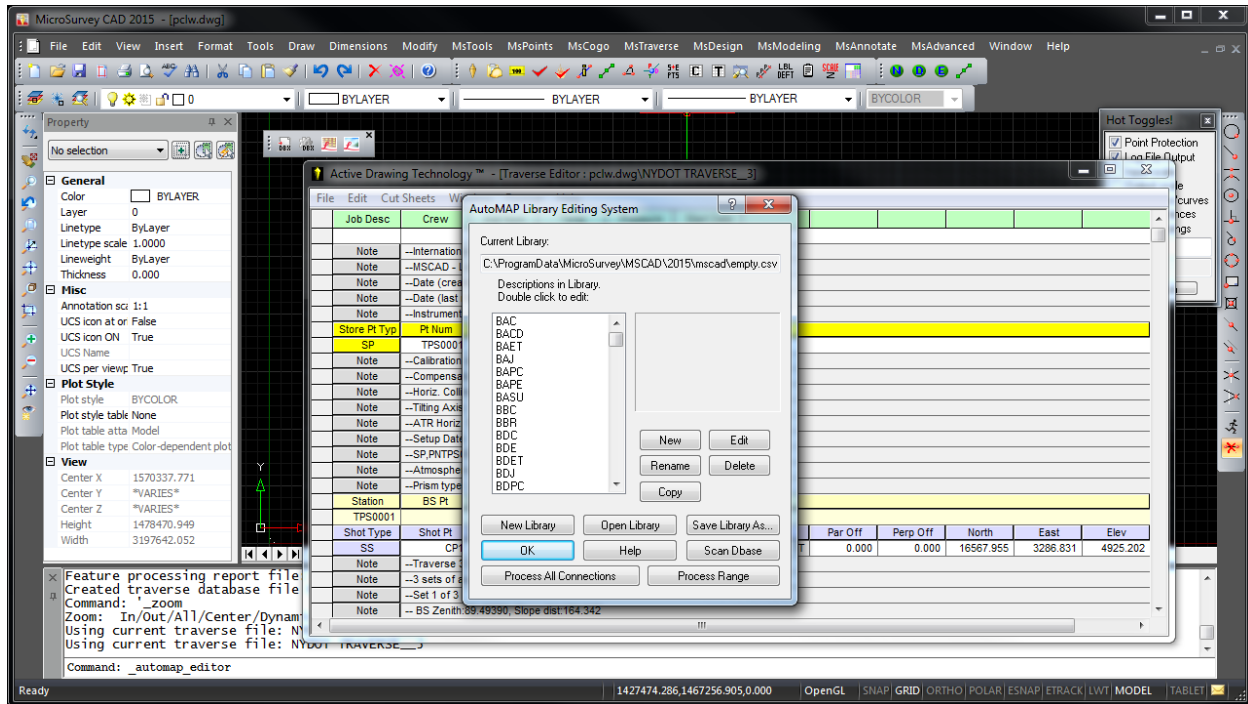
Benefit

More flexible control over how the resulting .kml/.kmz file will display in Google Earth

More detailed information about each exported point, line, and arc is now available within Google Earth, including full point coordinates and other geometric details

Enhanced: Leica DBX Import

Upgrade Tour Movie: [click here](#)



Feature

Import Codelist (optional)

Benefit

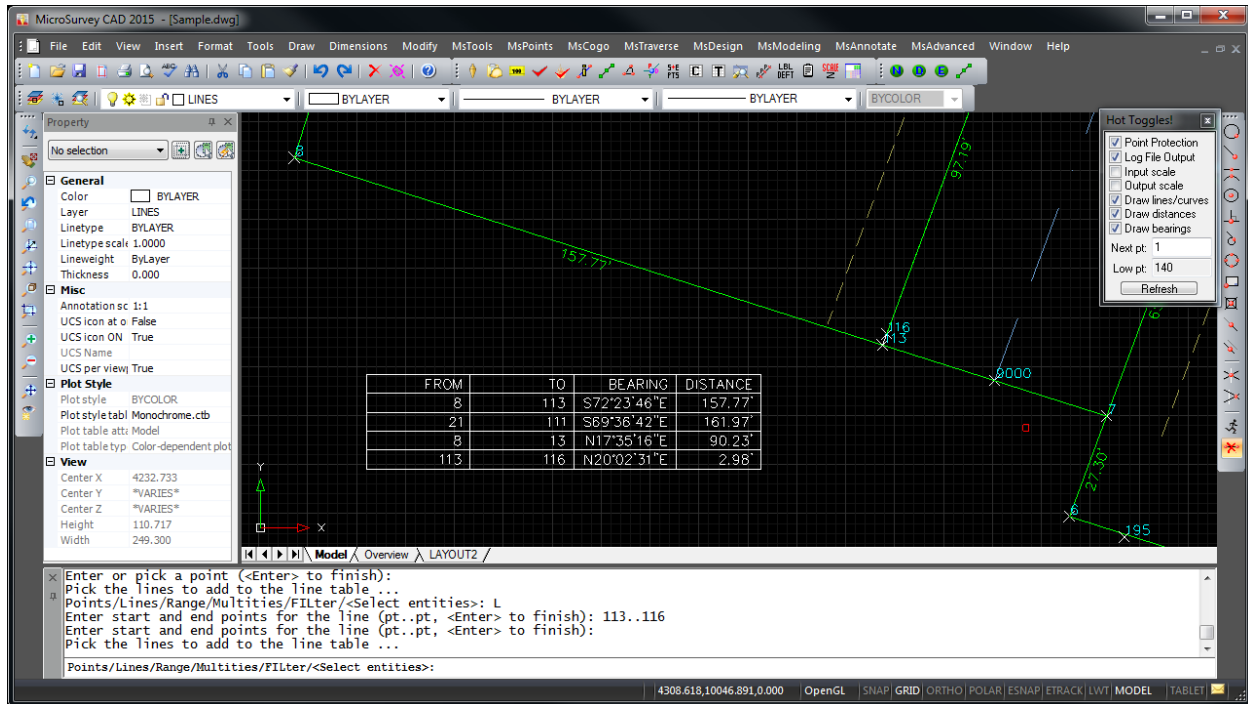
Codes from the database being imported can be automatically added to the current AutoMAP Library file, with all compatible options set as appropriate from the imported codelist.

Import Ghost Point Setups

“Ghost Point” setups (ie, setups that were performed in a different project) are now imported to the Active Traverse Editor and can be modified or reprocessed as part of the traverse.

Enhanced: Line/Curve/Multi-Tie Tables

Upgrade Tour Movie: [click here](#)



Feature

Benefit

Line Table: Specify lines via their Point IDs, or via a Range of Point IDs

More flexibility for selecting lines by their point IDs (like 1..2) or by a Range of Point IDs (like 1..10)

Curve Table: Specify curves via their point IDs

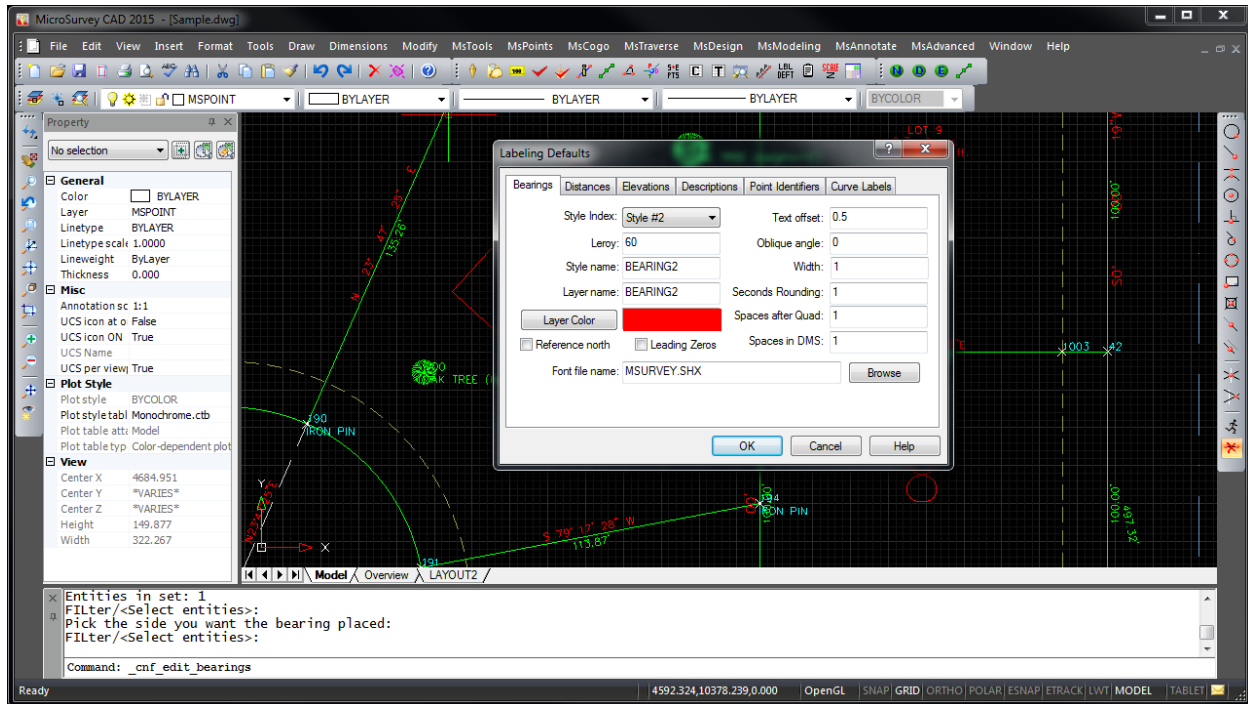
More flexibility for selecting curves by their point IDs (like 1..2..3)

Multi-Tie Table: Specify ties via a radial Point ID and a set of tied Point IDs

More flexibility for selecting ties by their point IDs

Enhanced: Line Labeling, Bearing Defaults

Upgrade Tour Movie: [click here](#)



Feature

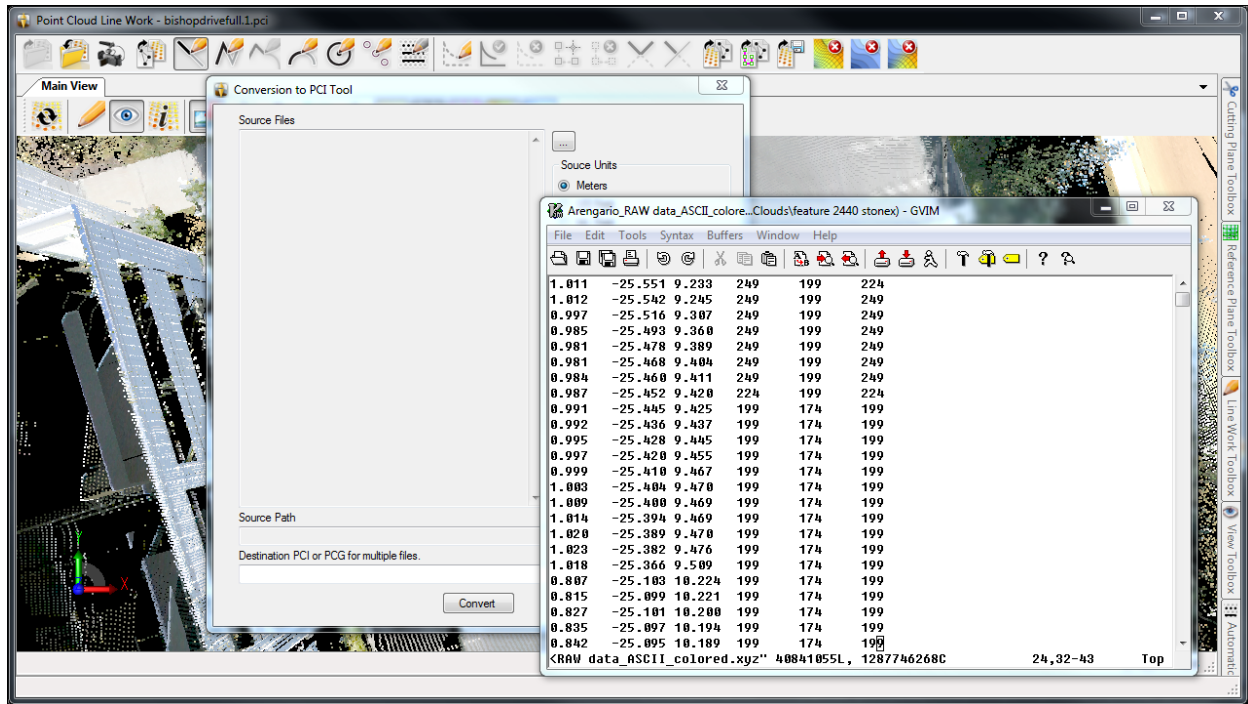
Spaces in DMS

Benefit

To improve the readability of Bearing/Azimuth Labels, a new option has been added to the five customizable Bearing Styles, to insert a specified number of spaces between the Degrees, Minutes, and Seconds values like: N 30° 40' 50" E

Enhanced: Point Cloud Conversion (.xyz files)

Upgrade Tour Movie: [click here](#)



Feature

The PCI Conversion Utility can be used with .xyz files containing "X Y Z", "X Y Z I", "X Y Z R G B", and "X Y Z I R G B" data.

Benefit

Work with more varieties of XYZ files, as exported from various third-party applications. Converted XYZ files will now retain their previously ignored Intensity and/or Color values.