



MicroSurvey CAD 2017

Features and Benefits

MicroSurvey CAD 2017 has powerful new and enhanced capabilities, streamlined workflows, and important bug fixes that continue to make MicroSurvey CAD the absolute best choice for land surveying and civil engineering professionals worldwide.

7/21/2017

Table of Contents

MicroSurvey CAD 2017 2

 New: IntelliCAD 8.2a 2

 New: Smart Polylines 3

 New: Smart Point Blocks 4

 New: Angular Units (DMS, Decimal Degrees and Gons/Grads) 5

 New: Bing Maps Imagery 6

 New: Cloud Storage Support..... 7

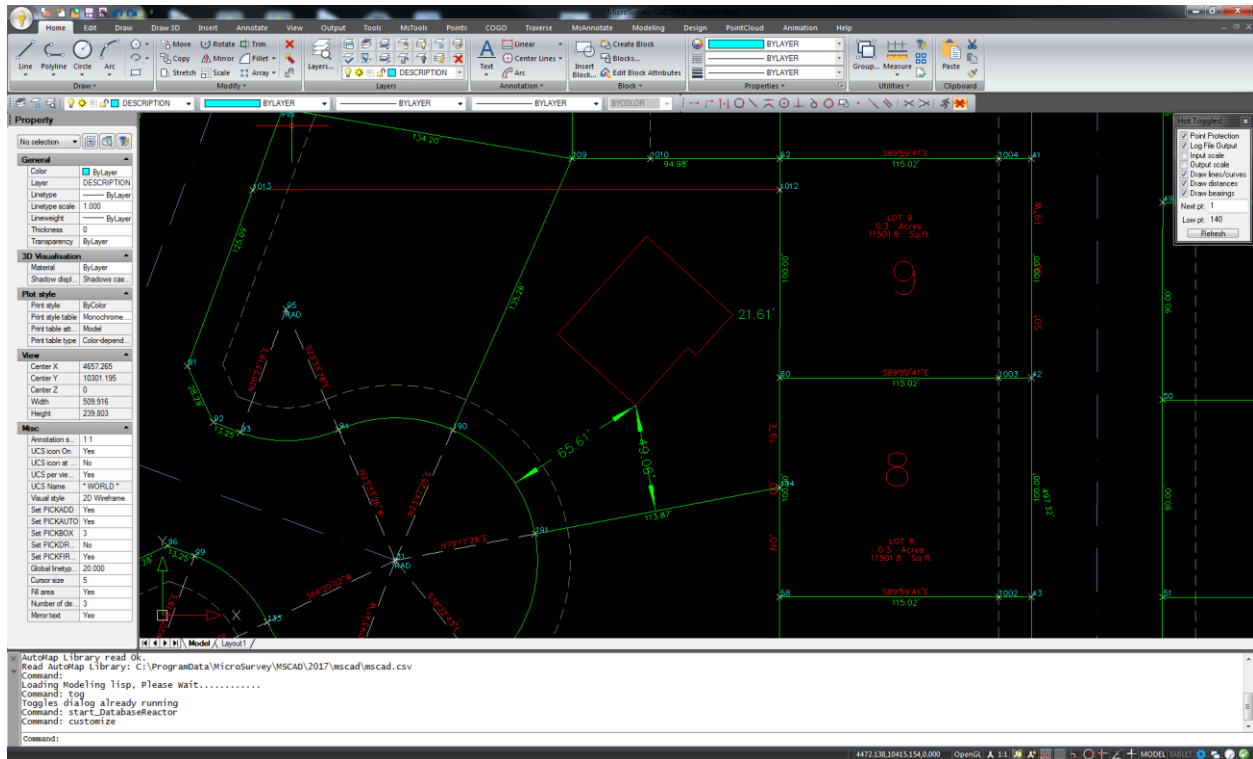
 Enhanced: Independent Point Numbers..... 8

MicroSurvey CAD 2017

Release Date: July 21, 2017

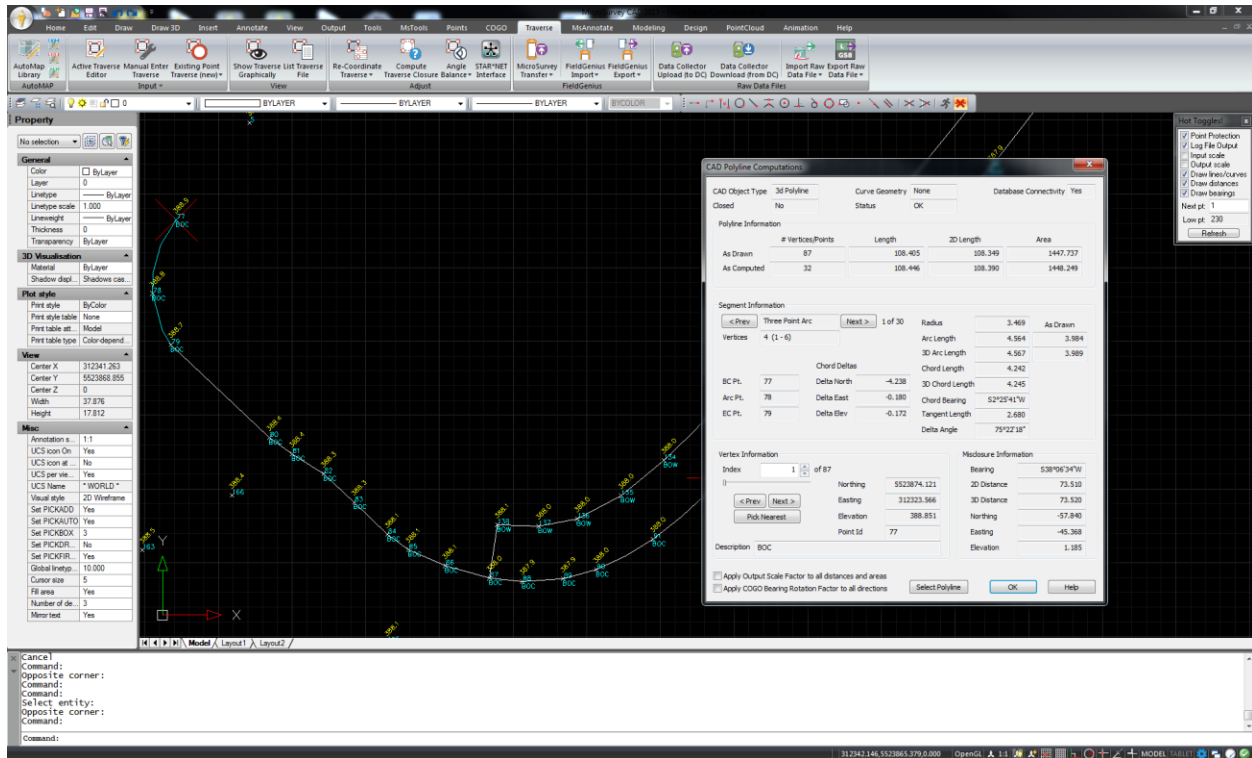
New: IntelliCAD 8.2a

Upgrade Tour Movie: n/a



Feature	Benefit
Performance Enhancements	Increased performance when working in drawing with many external references or complex blocks, and PDF creation.
Ribbon Improvements	Various improvements to how the Ribbon is organized, making it easier to find and use the most common commands.
Customizable Ribbon	The ribbon, menus, and toolbars are all now customizable via the CUSTOMIZE command. Easily configure your ribbon with a custom tab containing the commands you use most.
Multiline Text Editor	New multiline text editor allows you to edit multiline text in place. The old editor is still available too, for users who prefer it.
Standard 3D Orbit Controls	Mouse controls are consistent with other CAD packages.
New/Enhanced commands	FIELD to insert text fields like Date, Filename, etc; VPMAX and VPMIN to maximize and minimize viewports; BCOUNT to count the number of blocks in a selection set; IMAGEFRAMEMODE to control whether image frames are visible and printed; TEXTTOFRONT to move text, dimensions and leaders to front of other objects; ARRAY and REFEDIT have new dialogs making them easier to use; many new Lisp functions; and more!
975+ Bug Fixes	Ongoing improvements throughout the IntelliCAD platform.

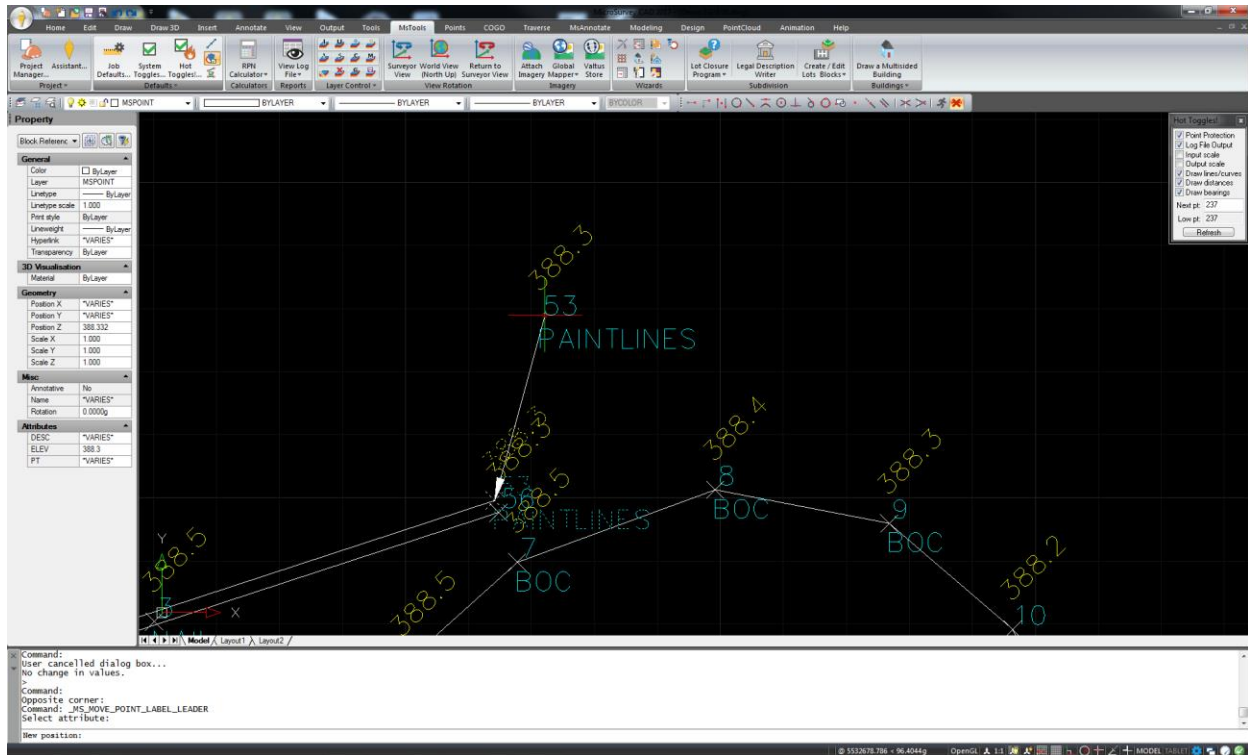
Upgrade Tour Movie: [click here](#)



Feature	Benefit
Smart Polylines	Polylines in your drawing can now be “smart” such that they will automatically update when points they connect through are edited or deleted.
CAD Polylines Dialog	Quickly access pertinent details about any polylines in your drawing.
Polyline Creation	The following commands can automatically create Smart Polylines in your drawing: AutoMAP Library, Auto-Adding Points to Objects, Bearing/Distance Auto-Labels, 3D Curve, FieldGenius Import, Leica Viva/Captivate Import.
Polyline Labeling	Label polylines using the same commands previously used for labeling lines. Labelled polylines will be automatically added to the database and made “smart”.

New: Smart Point Blocks

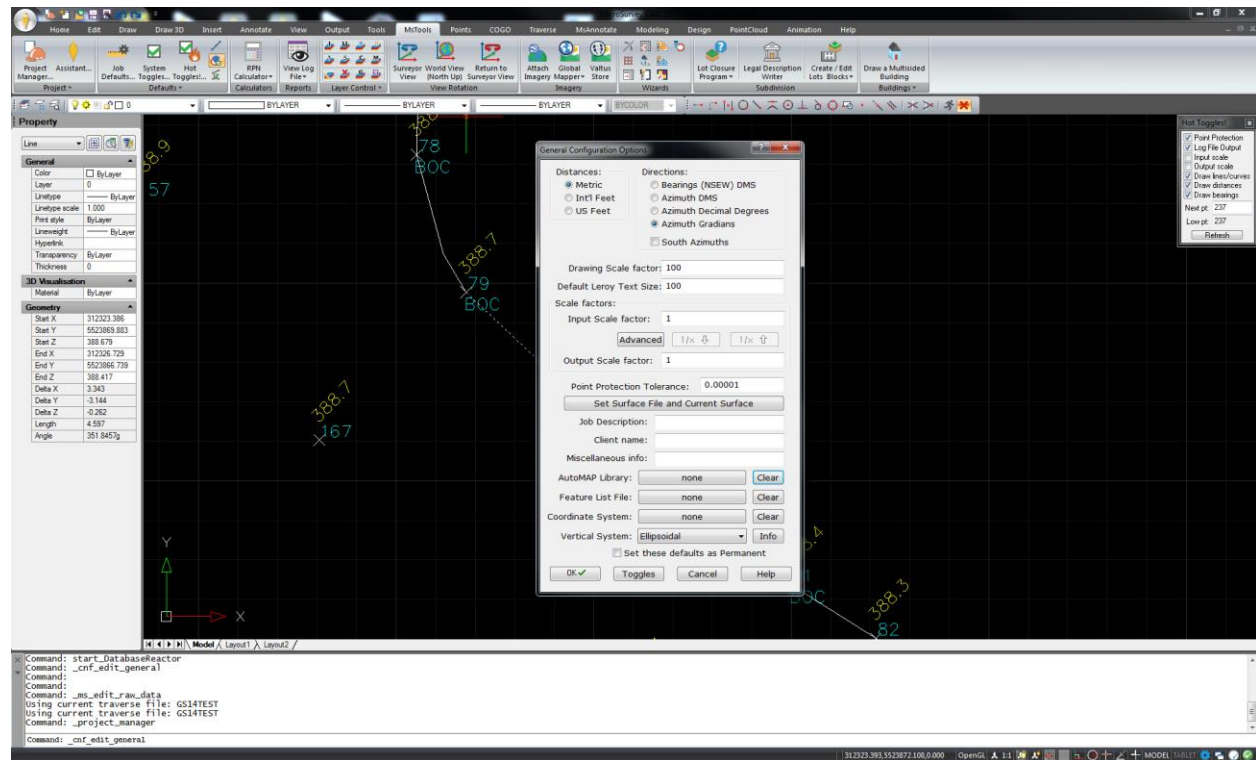
Upgrade Tour Movie: [click here](#)



Feature	Benefit
Point Blocks	Users can now choose to have their points drawn as a Point Block object which contains the node along with its ID Label Description Label and Elevation Labels all combined into one object.
System Toggle to Draw Points or Point Blocks	A system toggle has been added that controls whether points will be drawn as a separate point node and text labels like in previous versions (default), or combined into a single point block object.
Labeling Defaults & AutoMAP Library	The Layer, Color, etc for each element within the point blocks are controlled by your Labeling Defaults and AutoMAP Library, just like when using non-blocked points.
Point Label Editing	Labels in a Point Block can be moved or rotated via commands in the context (mouse right-click) menu.
Point Label Leaders	Labels in a Point Block can be moved with an automatic leader appearing that points from the labels back to the point ID, making it easy to cleanup your drawing in areas where there are multiple points in close proximity to each other.

New: Angular Units (DMS, Decimal Degrees and Gons/Gradians)

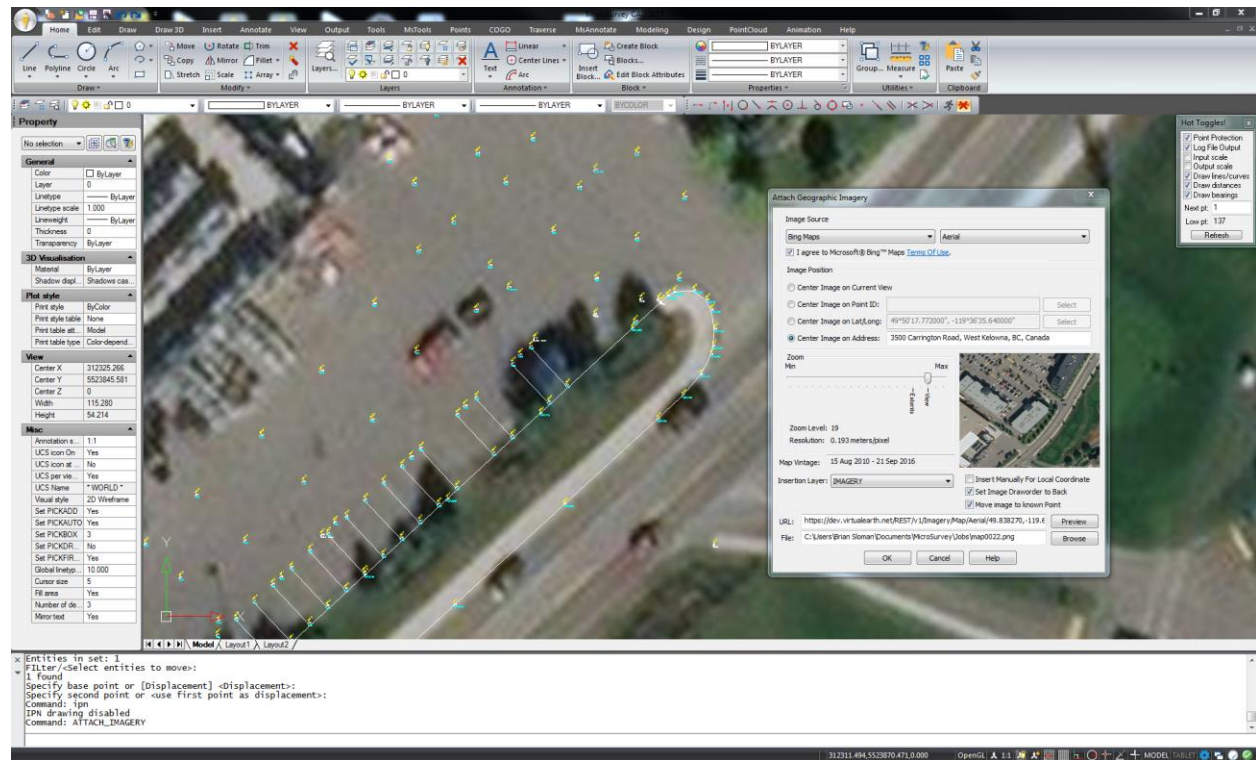
Upgrade Tour Movie: [click here](#)



Feature	Benefit
Degrees-Minutes-Seconds	Most North American users can continue to use the familiar DMS Bearing and DMS Azimuths formats just like in previous versions.
Decimal Degrees	Users in some regions prefer to work in Decimal Degrees.
Gons/Gradians	Users in some regions prefer to work in Gons/Gradians.
Job Defaults	Specify the desired angular unit for each drawing directly on the Job Defaults screen.
Input/Output	The selected angular unit is now used for all input and output of angles and directions in the program, including both the drafting and survey feature sets.

New: Bing Maps Imagery

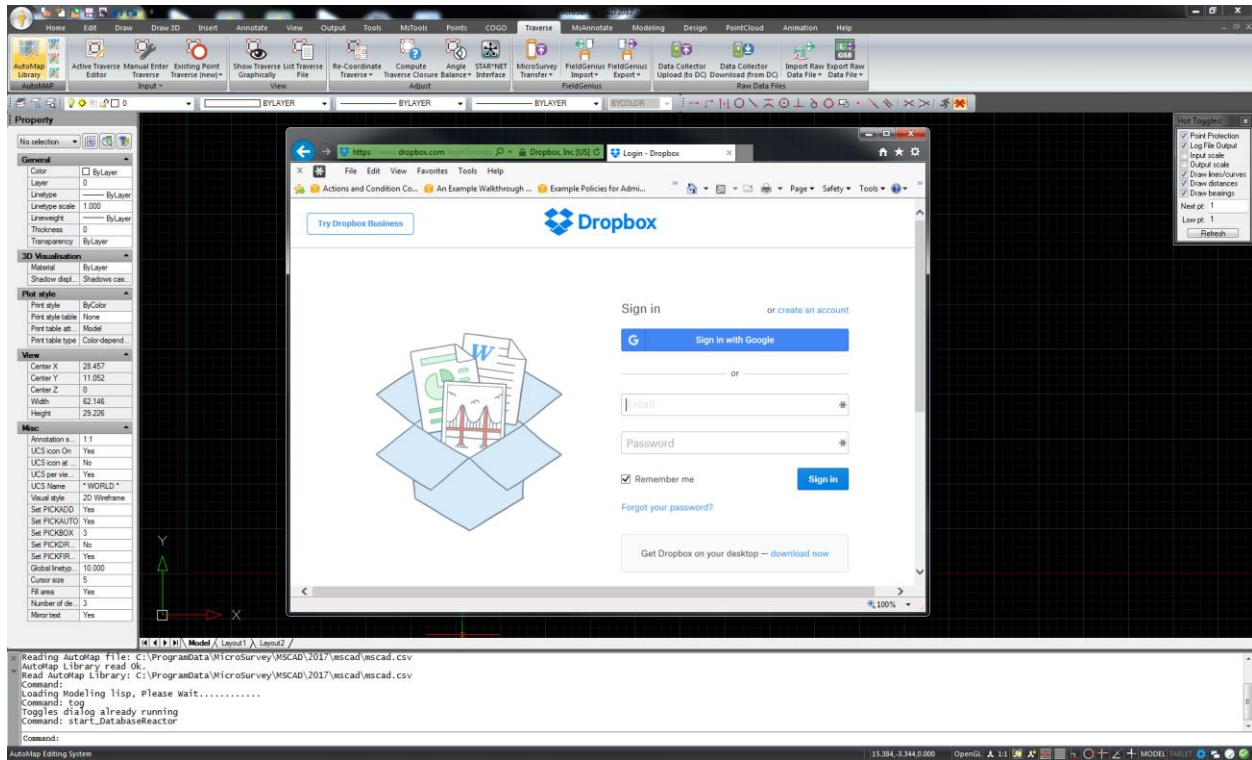
Upgrade Tour Movie: [click here](#)



Feature	Benefit
Bing Maps	Attach aerial, road, or hybrid imagery from Bing Maps directly into your drawing.
Offline Raster Image File	Imagery is downloaded to a local file and inserted as a raster image file, so the imagery in your drawing does not change unexpectedly when new imagery becomes available.
Use with Georeferenced or Local/Assumed Coordinate Systems	Works with both georeferenced drawings (UTM, SPCS, etc) or local/assumed coordinate systems. The process is just a little more automatic when using a georeferenced drawing.
Align Imagery to Point	After the imagery is inserted in your drawing, you can further improve its positional accuracy by aligning an identifiable feature in the image to a specific point in your drawing.

New: Cloud Storage Support

Upgrade Tour Movie: n/a



Feature

Database Robustness

Benefit

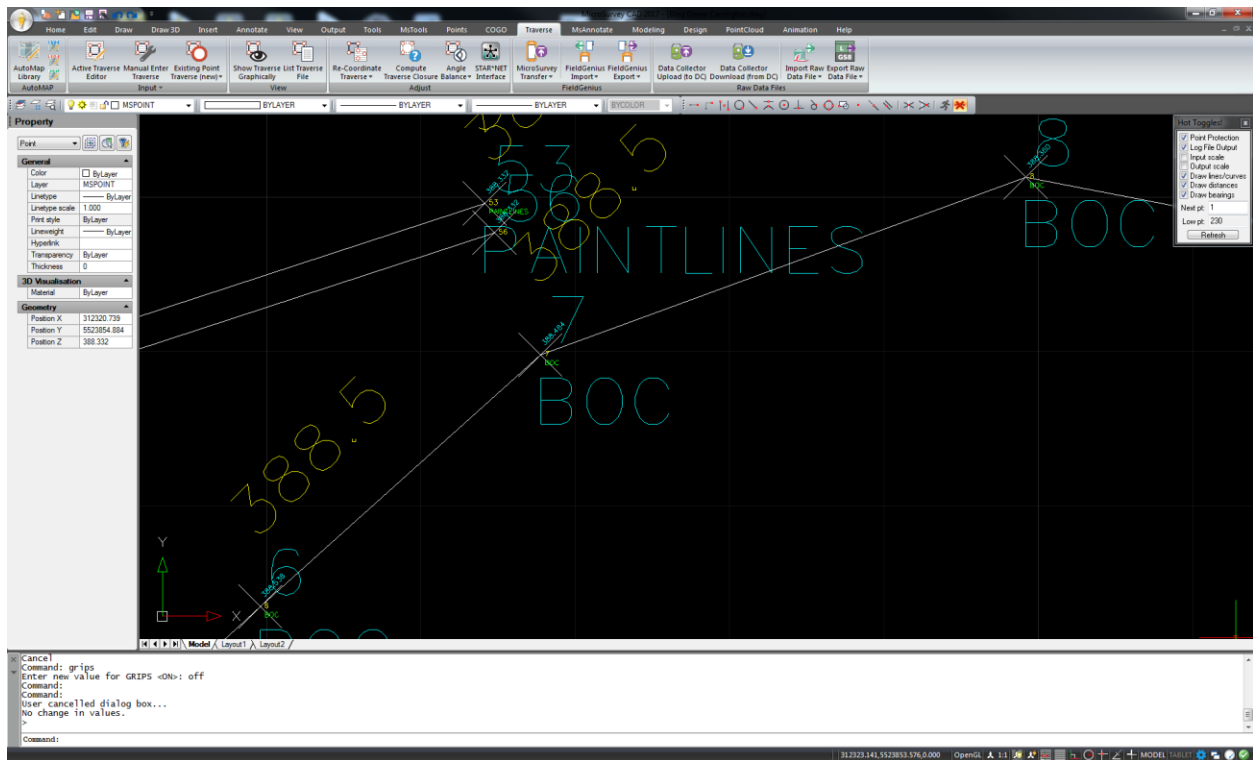
Access to the survey database has been strengthened so that simultaneous access to the database files by another application does not cause issues. Previously, certain applications like cloud storage services and some virus scanners could interfere with the database read/write operations, and result in Codebase Errors and crashes.

Cloud Storage (Dropbox, Microsoft OneDrive, Google Drive, etc.)

Open and save your drawing files directly in your favourite third-party cloud storage service's folder, where they will be automatically synchronized to the cloud and other workstations. *Note: cloud storage requires a subscription to third-party service(s).*

Enhanced: Independent Point Numbers

Upgrade Tour Movie: n/a



Feature

Performance Enhancements

Benefit

The IPN, IPD, and IPE labels can update faster, without flicker, and without disappearing unexpectedly.