

STAR*NET 9.1 is a maintenance release that includes new improvements and fixes across all Pro, Plus, Std and Lev editions.

MicroSurvey STAR*NET 9.1 introduces STAR*NET Ultimate – an all-new, top-tier edition which provides a command line interface and can run larger network adjustments with a 65,000 station limit.

STAR*NET 9.1 Pro and Ultimate both now include a license for all of the standalone STAR*NET data conversion utilities.

MicroSurvey STAR*NET 9.1

Features and Benefits

MicroSurvey Software Inc.

Table of Contents

MicroSurvey STAR*NET 9.1	2
New: STAR*NET Ultimate // Enhanced: STAR*NET Pro.....	2
New: Command Line Interface (STAR*NET Ultimate only).....	3
New: 65,000 Station Limit (STAR*NET Ultimate only).....	4
New: All Data Conversion Utilities (STAR*NET Pro and Ultimate only).....	5
New: Other Enhancements (all STAR*NET editions)	6

MicroSurvey STAR*NET 9.1

Release Date: March 29, 2018

New: STAR*NET Ultimate // Enhanced: STAR*NET Pro

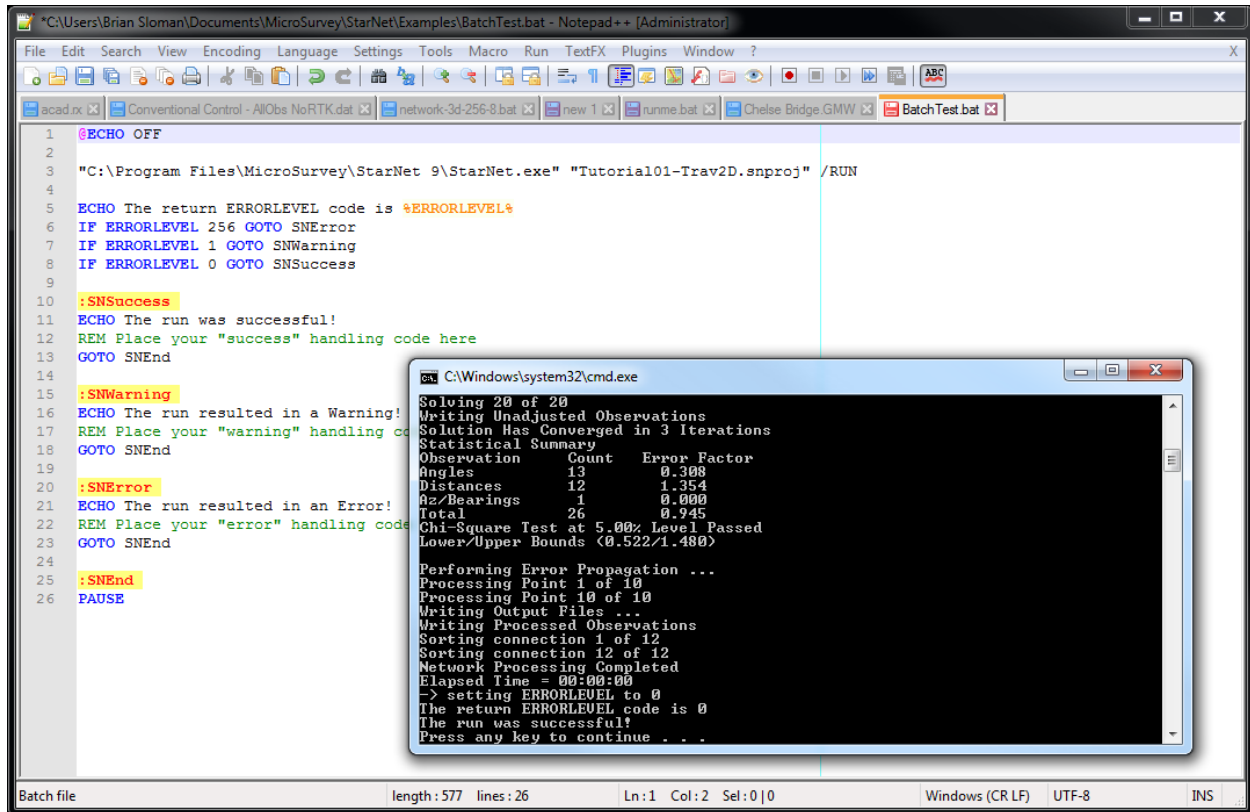
Upgrade Tour Movie: n/a (see following sections)



Feature	Benefit
STAR*NET Ultimate	STAR*NET Ultimate contains all capabilities of STAR*NET Pro, plus the following: <ul style="list-style-type: none"> • Command Line Interface for running STAR*NET adjustments from batch files, scripts or other third-party applications. • Increased station limit from 10,000 stations to 65,000 stations for running STAR*NET adjustments with large data sets. • Access to all standalone STAR*NET data conversion utilities without requiring an extra license for them.
STAR*NET Pro	STAR*NET Pro retains all previous capabilities for 1D, 2D and 3D adjustments, with GNSS, conventional and level network data, plus the following: <ul style="list-style-type: none"> • Access to all standalone STAR*NET data conversion utilities without requiring an extra license for them.
STAR*NET Plus	STAR*NET Plus retains all previous capabilities for 1D, 2D and 3D adjustments with conventional and level network data.
STAR*NET Standard	STAR*NET Standard retains all previous capabilities for 2D and 3D adjustments with conventional network data.
STAR*NET Lev	STAR*NET Lev retains all previous capabilities for 1D level network adjustments.

New: Command Line Interface (STAR*NET Ultimate only)

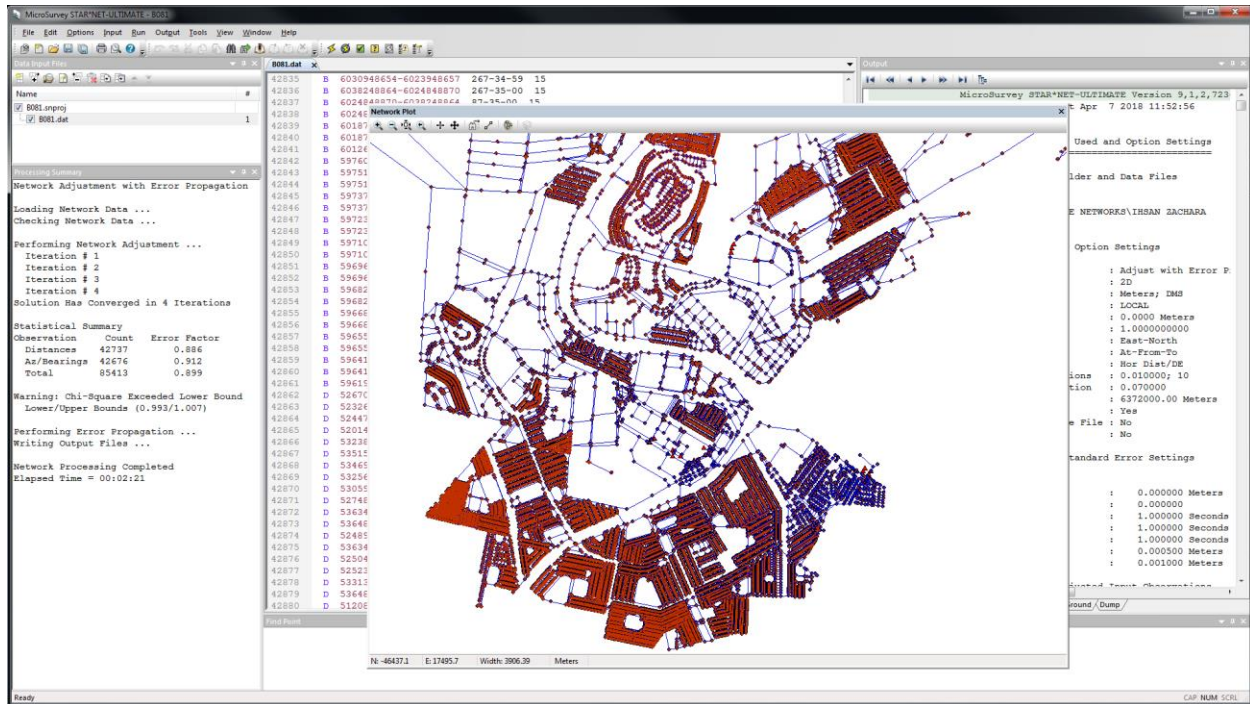
Upgrade Tour Movie: [click here](#)



Feature	Benefit
Open Project	<p>A STAR*NET Project can be Opened by specifying its path and filename. For example:</p> <pre>starnet.exe "C:\path\filename.snproj"</pre> <p>Therefore, you can now open a project simply by double-clicking on any .snproj file (instead of just launching STAR*NET as previous versions did). This Open capability is available in all STAR*NET versions.</p>
Run Project	<p>A STAR*NET Project can be Run by specifying its path and filename with the optional /RUN parameter. For example:</p> <pre>starnet.exe "C:\path\filename.snproj" /RUN</pre> <p>This will open the specified project without displaying the STAR*NET user interface, run the adjustment, write the output files, and write a new Status file that indicates whether the run was successful or if any warnings or errors were encountered, and return a standard ERRORLEVEL return code with the same status code as is recorded in the Status file.</p>
Integrate with batch files, scripts, or third-party applications	<p>STAR*NET Ultimate can now be run in continuous, automated, or other scenarios, as controlled by logic contained in a calling batch file, script, or other third-party application.</p>

New: 65,000 Station Limit (STAR*NET Ultimate only)

Upgrade Tour Movie: [click here](#)



Feature

Maximum 65,000
Network Stations

Benefit

STAR*NET Ultimate can adjust networks containing up to 65,000 stations (plus sideshots). Previously, an adjustment could not exceed 10,000 stations. Large networks no longer need to be divided up and adjusted independently.

Sideshots are computed after the adjustment and are therefore not included in the network size.

A 2D adjustment of a large network containing over 20,000 stations connected by over 85,000 bearing and distance observations takes a couple minutes to run.

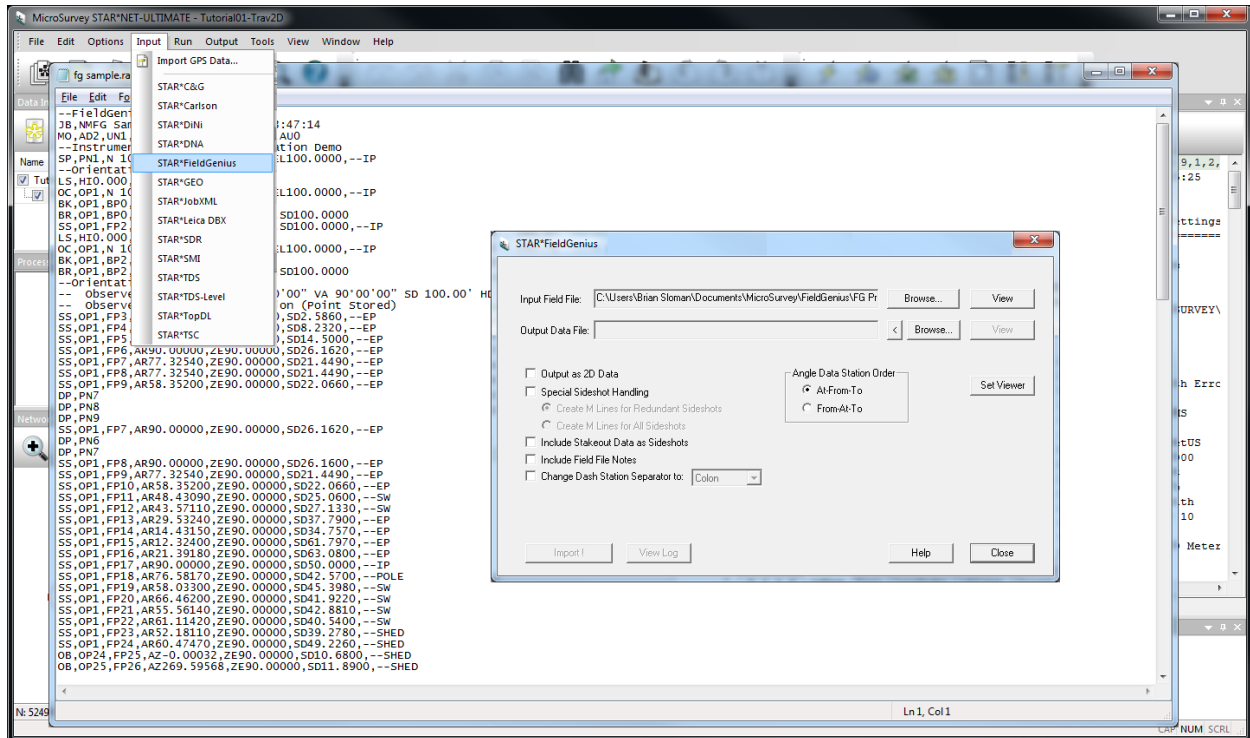
A 3D adjustment of a large network containing 65,000 stations connected by nearly two million multiset observations takes about an hour to run.

Tip: The 64-bit version is recommended for large adjustments.

Note: STAR*NET Pro/Plus/Standard/Lev all retain the previous maximum of 10,000 network stations.

New: All Data Conversion Utilities (STAR*NET Pro and Ultimate only)

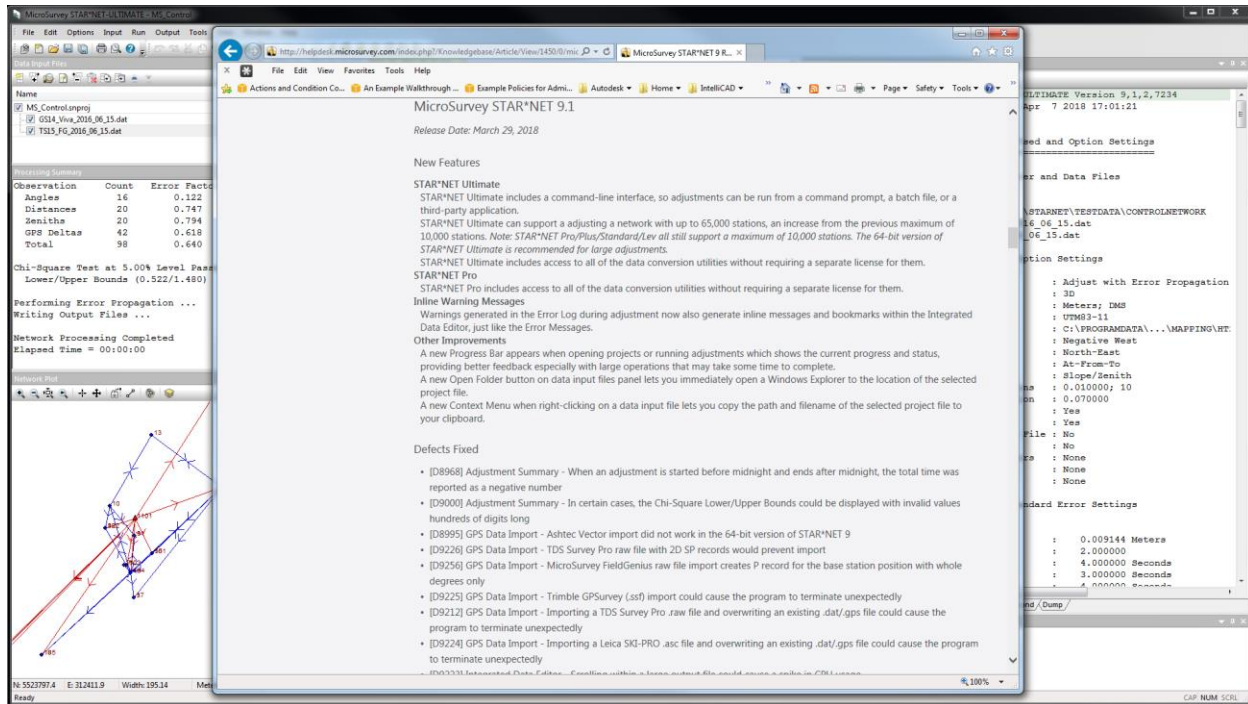
Upgrade Tour Movie: [click here](#)



Feature	Benefit
Conversion Utility Licenses Included	<p>Your STAR*NET Pro and STAR*NET Ultimate license now includes access to all data conversion utilities, including:</p> <ul style="list-style-type: none"> • STAR*C&G (for C&G Software data files) • STAR*Carlson (for Carlson SurvCE raw files) • STAR*DiNi (for Trimble DiNi levels) • STAR*DNA (for Leica DNA levels) • STAR*FieldGenius (for MicroSurvey FieldGenius raw files) • STAR*GEO (for Geodimeter total stations) • STAR*JobXML (for Spectra Precision Survey Pro, Trimble Access, etc.) • STAR*Leica DBX (for Leica Viva and Leica Captivate files) • STAR*SDR (for SDR20 and SDR33 files) • STAR*SMI (for SMI files) • STAR*TDS (for TDS Survey Pro raw files) • STAR*TDS-Level (for TDS Survey Pro raw leveling files) • STAR*TopDL (for Topcon DL levels) • STAR*TSC (for Trimble TSC1/TSCe dc files) <p>Separate licenses for these conversion utilities are no longer required for STAR*NET Pro or Ultimate users. (STAR*NET Standard, Lev and Plus licenses do not include the conversion utilities, but they can be licensed individually.)</p>

New: Other Enhancements (all STAR*NET editions)

Upgrade Tour Movie: [click here](#)



Feature	Benefit
Replace Command	The Edit > Replace (Ctrl+H) command that disappeared in v9.0 is back. The Replace command is great for correcting systematic errors like incorrect point codes or pole heights in a data file.
GoTo Command	The Edit > Go To (Ctrl+G) command that disappeared in v9.0 is back. The Go To command is great for jumping to a specific line number in a data file.
Inline Warning Messages	The new Inline Error Messages that were introduced in v9.0 have been extended to also cover Warning Messages. Errors are marked in red and warnings are marked in orange, which makes it easier to identify bad data.
Progress Bar	A Progress Bar has been added during certain (potentially) long operations like opening files and running adjustments. This provides both a better visual indication that something is happening, and an opportunity to Cancel the long operation if needed.
Browse to Data File	A Browse button has been added to the Data Input Files panel, that will open a File Explorer window to the currently selected file. This makes it faster to navigate your file system and locate your project or data files.
Copy Path and Filename	A Context menu has been added to the Data Input Files, that lets you copy the path and filename of the currently selected file. This makes it faster to locate your project or data files and copy/paste it into a data file comment or anywhere else.
Bug Fixes	Various important fixes as detailed in the online release notes .